

# LANDS AND SURVEYS DEPARTMENT

ST. VINCENT W.I.

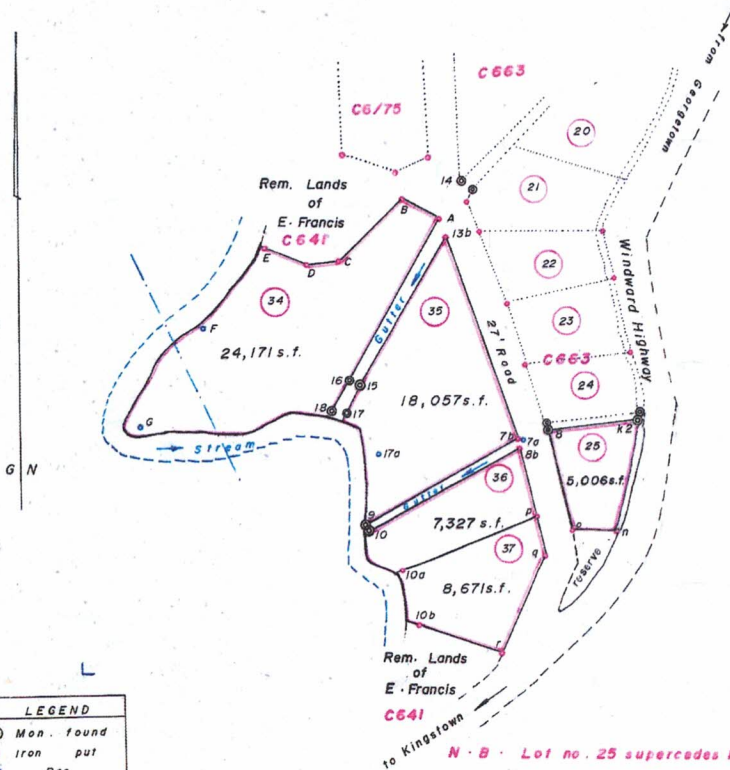
Field Book No.

Survey Order No. P146/86

Correspondence No.

Parish of Charlotte  
 Cadastral Block No.  
 Block or Locality South Union  
 Grid Co-ordinates of sta. K2  
 E 493 675 · 96 m.  
 N 1460 372 · 99 m.

LINE	BEAR.	DIST.
K2 - B	265° 26'	71.7
B - O	166 52	86.9
O - n	93 28	37.7
n - K2	11 34	95.0
14 - A	209 35	36.3
A - B	299 43	35.4
B - C	227 28	76.2
C - D	262 42	27.2
D - E	293 34	37.7
E - F	2 04	85.5
F - G	213 44	99.9
G - 18	86 17	163.7
18 - 16	31 45	30.3
16 - A	29 35	156.7
15 - 17	208 28	26.4
17 - 17a	143 25	43.8
17a - 9	189 13	61.2
9 - 7a	61 53	151.8
7a - 13b	339 47	184.4
13b - 15	210 26	146.0
7b - 7a	61 53	5.6
13b - 7b	161 31	188.3
8 - 8b	241 52	28.0
8b - 10	241 52	146.4
10 - 10a	138 45	45.5
10a - p	68 22	121.2
p - 8b	346 51	60.0
p - q	166 52	34.1
q - r	204 09	92.4
r - 10b	290 16	73.8
10b - 10a	344 03	49.1



**LEGEND**

- ⊙ Mon. found
- Iron put
- Peg
- Pipe Line
- ⊙ Mon. Rep.

SCALE - 1/1000

Distances are in feet/metres

Note - To obtain true bearing add

PLAN of  $\frac{5}{8}$  parcels of Land bordered pink containing altogether sixty-three thousand, two hundred and thirty-two square feet. (63,232 s.f.)

Surveyed by me with due authority in May - August 1986 at the instance of Emmanuel Francis.

*Stonest*  
 Auth./Licenced Land Surveyor

Approved and Lodged on the 12<sup>th</sup> September 1986

*[Signature]*  
 Chief Surveyor

Drawn by *[Signature]*

Checked by K.J.

Entered on 9-86

Drawing No. **C727**