



# LANDS AND SURVEYS DEPARTMENT

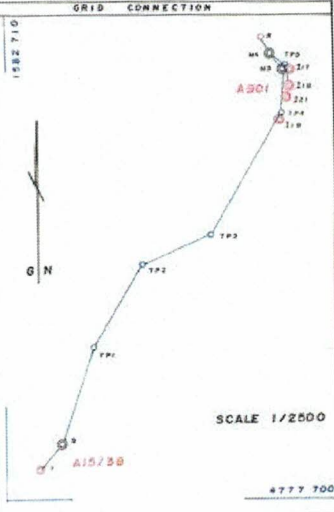
ST. VINCENT W.I.

Field Book No.

Survey Order No. P254/2022

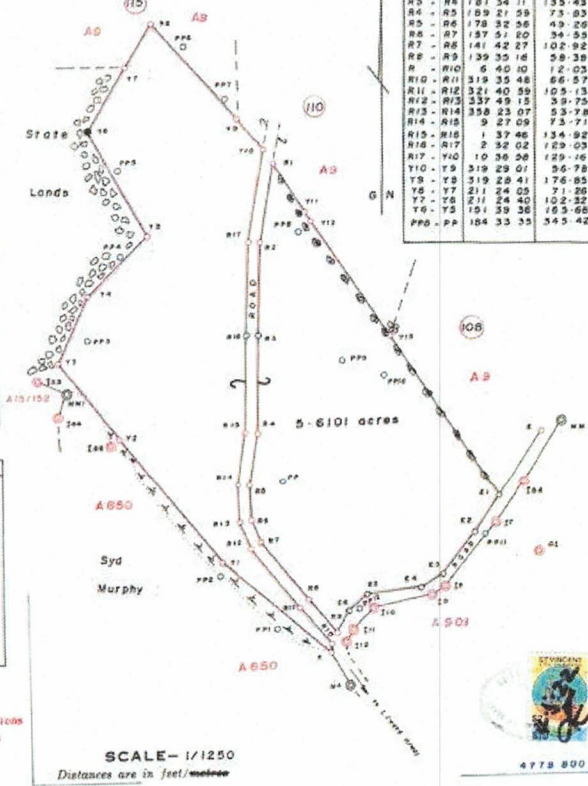
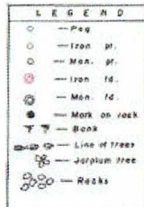
Correspondence No.

Parish of St. Andrew  
Cadastral Block No.  
Block or Locality Campden Park  
Grid Co-ordinates of sta. E1  
E 482 695 - 63 M  
N 1456 694 - 30 M



TRAVERSE			TRAVERSE			TRAVERSE		
Line	Bear	Dist	Line	Bear	Dist	Line	Bear	Dist
TP4 - TP5	4°40'30"	154.12	Y5 - Y4	225°31'35"	116.82	R9 - E6	31°45'37"	32.25
TP5 - M4	307°19'16"	53.11	M4 - R	130°09'08"	51.94	E6 - E5	49°19'01"	35.79
TP5 - I17	140°14'27"	19.03	Y4 - Y3	204°34'33"	101.84	E5 - E4	83°41'49"	75.24
TP5 - I18	169°19'12"	60.36	Y3 - Y2	142°02'53"	133.32	E4 - E3	59°34'02"	55.10
I19 - TP5	8°00'25"	154.07	Y2 - Y1	142°02'44"	224.43	E3 - E2	38°14'54"	73.16
TP5 - I21	176°58'55"	90.38	Y1 - R	130°38'44"	194.04	E2 - E1	33°07'19"	62.31
Y10 - R1	147°55'52"	23.62	I - R	40°58'06"	92.40	E1 - F13	327°00'52"	268.15
R10 - R9	24°10'43"	17.71	9 - TP1	17°58'53"	282.47	F13 - F12	326°49'41"	192.71
E1 - K	33°34'58"	108.00	TP1 - TP2	30°16'36"	265.33	F12 - F11	326°49'08"	15.18
O1 - I7	304°31'03"	71.36	TP2 - TP3	68°20'59"	208.41	F11 - R1	327°55'51"	78.87
			TP3 - TP4	30°00'31"	389.97	R1 - R2	190°37'28"	110.67
						R2 - R3	182°32'02"	127.64
						R3 - R4	181°34'11"	135.43
						R4 - R5	189°21'59"	73.03
						R5 - R6	178°32'56"	49.29
						R6 - R7	157°51'20"	34.53
						R7 - R8	141°42'27"	102.92
						R8 - R9	139°35'18"	58.39
						R - R10	6°40'10"	12.03
						R10 - R11	319°35'48"	86.57
						R11 - R12	321°40'59"	105.13
						R12 - R13	337°49'15"	39.75
						R13 - R14	358°23'07"	53.78
						R14 - R15	9°27'09"	73.71
						R15 - R16	1°37'46"	134.92
						R16 - R17	2°32'02"	129.03
						R17 - R18	10°36'58"	129.16
						T10 - T9	319°29'01"	56.78
						T9 - T8	319°28'41"	176.85
						T8 - T7	211°24'05"	71.26
						T7 - T6	211°24'40"	102.32
						T6 - T5	191°39'36"	163.66
						PP8 - PP	184°33'35"	345.42

Line	Bear	Dist
PP1 - PP2	344°01'56"	108.57
PP2 - I66	321°22'59"	258.09
I66 - MM1	321°22'59"	93.62
MM1 - PP3	21°45'05"	77.76
PP3 - PP4	22°26'35"	123.34
PP4 - PP5	359°19'01"	118.60
PP5 - PP6	29°15'38"	193.17
PP6 - PP7	142°56'20"	91.79
PP7 - Y10	143°22'31"	87.62
T10 - PP8	158°46'03"	123.09
PP8 - PP9	162°31'17"	187.36
PP9 - PP10	110°52'46"	62.73
PP10 - PP11	149°01'43"	261.38
PP11 - I9	221°47'10"	111.54
I9 - PP12	280°37'60"	102.65
MM - I6A	212°12'29"	97.86
I6A - I7	218°08'57"	70.09
I7 - I8	216°42'57"	113.08
I8 - I9	237°44'19"	21.43
I9 - I10	258°21'09"	82.17
I10 - I11	226°15'21"	39.82
I11 - I12	211°22'19"	19.80
I12 - R9	314°37'17"	18.58
M4 - M5	141°14'37"	53.89
MM1 - I44	203°05'19"	34.58
M4 - I33	292°43'46"	44.12
Y3 - MM1	163°31'32"	42.93



Note - To obtain true bearing add  
PLAN of a parcel of Land bordered Pink containing Five point six one zero one acres (244,375 s.f.)

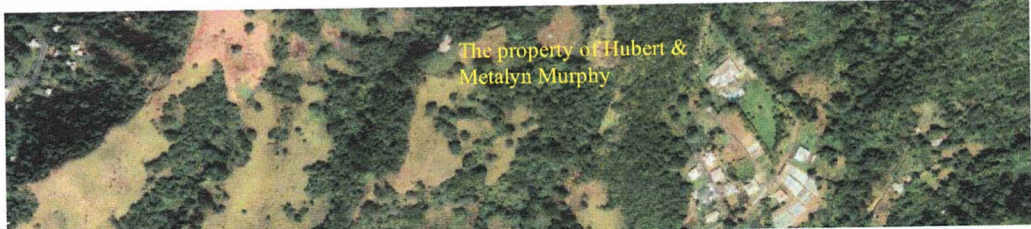
Surveyed by me with due authority in Jan. - April 2022 at the instance of Metalyn Murphy  
*Ryann Norton*  
 Aith Licensed Land Surveyor  
 Norton

Approved and Lodged on the 4<sup>th</sup> May 2022  
*Baines*  
 Chief Surveyor

Drawn by *J. Jack*  
 Checked by *Kevin*  
 Entered on 6/25/22

Drawing No. A909

## Location Map



The property of Hubert & Metalyn Murphy